

# Pathology Services Overview

# Histology and Anatomic Pathology

**Our world-class histology laboratory and anatomic pathology team will support you and accommodate your study needs.** We offer a wide variety of services to fit your needs. We can receive fixed or frozen tissues untrimmed\*, trimmed\*, embedded in paraffin blocks or even prepared slides for staining.

## Our flexible services include:

- Routine paraffin embedding
- Special embedding using agarose gel (cell suspensions, small tissues, special orientation)
- Preparation of unstained slides only
- Routine Hematoxylin & Eosin staining
- Decalcification
- Special staining
  - *Histological stains*
  - *Immunohistochemistry stains*
- Recut serial sections (unstained or H&E stained)
- Small animal dissection

Stain	Purpose
Alcian Blue (pH 1.0 or pH 2.5) with or without PAS	Carbohydrates/Mucin
Congo Red Amyloi	Amyloid
Rhodanine (Copper)	Copper
Cresyl Violet—Nissl	Neurons/Pituitary
Verhoeff Van Gieson (VVG)	Connective/Muscle
Oil Red O (frozen fixed tissue only)	Lipids
Giemsa	Microorganisms/Nuclear Elements
Glycogen-Digested PAS/H	Carbohydrates/Mucin
Churukian's Ammoniacal Silver Method (PcAg)	Pneumocystis (lung)/Fungi
Gram's (modified Brown-Hopps; Brown-Brenn)	Microorganisms
Hall's Bilirubin (Bile)	Pigments/Minerals
Hematoxylin and Eosin (H&E)	Nuclear/Cytoplasmic
Luxol Fast Blue (LFB)	Neuro/Pituitary
Methylene Blue	Nuclear Elements
Movat's Pentachrome	Connective/Muscle
Periodic Acid-Schiff (PAS)	Microorganisms/Neuro/Pituitary
Prussian blue (Perl's Iron)	Iron (Hemosiderin)
Toluidine Blue	Nuclear Elements
Trichrome—Masson's	Connective/Muscle
Alizarin Red (Calcium)	Pigments/Minerals
Steiner (modified)	Microorganisms
Ziehl-Neelsen (AFB)	Acid-fast bacteria
Picrosirius Red	Collagen

**We offer a comprehensive list of immunohistochemical antibodies**

\* Untrimmed is whole organs and trimmed is tissues in cassettes



# Anatomic Pathology

Our team of veterinary pathologists has extensive experience and expertise with a wide variety of research models. We are here to meet your needs including consultation on study design, troubleshooting unexpected challenges, and interpreting study results to help advance your research. As with our histology services, we are flexible--willing and able to evaluate IDEXX BioAnalytics prepared slides or previously prepared glass or digital slides.

## Anatomic Pathology: Multiple services to meet your needs

### Research/Toxicological Pathology

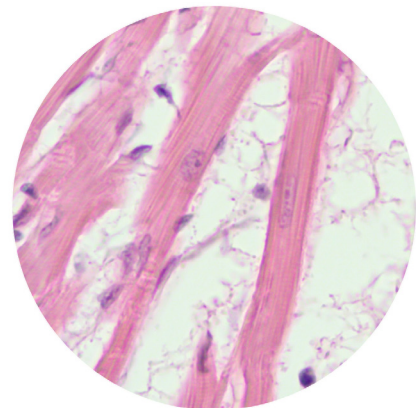
- Our pathologists can consult on study design, evaluation goals, and scoring algorithms to help produce meaningful data and identify the effects of treatments on research models. We have expertise in Tox Path using International Harmonization of Tox Path Nomenclature and scoring.
- Our team of **boarded veterinary pathologists** has experience in a wide array of research areas including: NASH/NAFLD, renal and hepatic studies, oncologic pathology, reproductive pathology, organoid analysis and others.
- Ask about our pathologists- with a wide variety of specialties, we can support your research. Biosketches are available from your account manager upon request.
- Our areas of investigational product expertise include pharmaceuticals, small and large molecules, biologicals, and medical devices in a wide variety of laboratory species.
- IDEXX BioAnalytics also has extensive experience in Clinical Pathology. This makes us uniquely positioned to work with you on research projects that cross over into both anatomic and clinical pathology.

### Research/Toxicological Pathology

- Used to diagnosis the cause of unexpected outcomes in your animal colony, vivarium, or study.
- Consultation with our knowledgeable and accessible experts can help quickly identify intervention and disease management strategies.

## Anatomic Pathology: Multiple services to meet your needs

- Digital photography (Gross and Microscopic)
- Annotated or non-annotated digital images
- Analysis of IHC stained slides using **HaloR Image Analysis Platform**
- Digital Image and Slide Analysis using HaloR Image Analysis Platform



# Our laboratories are focused on supporting your unique research needs.

Our global network of experts are ready to support your research testing needs by providing direct consultations and meaningful results. IDEXX BioAnalytics also delivers comprehensive animal health monitoring, biological materials testing and preclinical testing.

## Client Support Services (NA)

1-800-669-0825  
idexxbioanalytics@idexx.com  
idexxbioanalytics.com

## Client Support Services (EU)

idexxbioanalytics-europe@idexx.com  
idexxbioanalytics.eu

## Need help getting started?

Ask Our Experts



Animal Health  
Monitoring



Biological Materials  
Testing



Preclinical  
Testing



**IDEXX**

IDEXX **BioAnalytics**