

REPLACE™

Exhaust Dust Testing (EDT) Health Monitoring

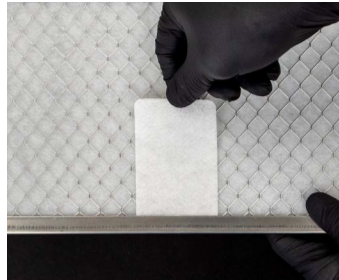
IDEXX BioAnalytics

Preparation



- 1 EDT works with IVC racks without cage-level filtration of exhaust air. Materials needed include: a clean manufacturer's exhaust air prefilter, **REPLACE™** matrix and an IDEXX supplied flat metal clip.

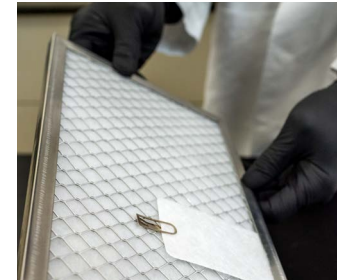
REPLACE™ EDT Process



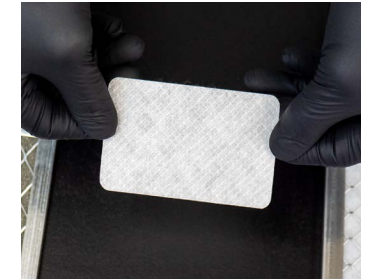
- 2 With fleece side facing up, tuck one end of **REPLACE™** matrix under the prefilter frame. More than one **REPLACE™** may be positioned on the prefilter if multiple samples or time-points for the health monitoring period are desired.



- 3 Secure the free end of **REPLACE™** matrix with the supplied flat metal clip with the outer u-shaped portion of the clip on top of **REPLACE™** and the inner tongue of the clip tucked under the prefilter wire mesh. The **REPLACE™** and clip should be secure and flat against the prefilter.

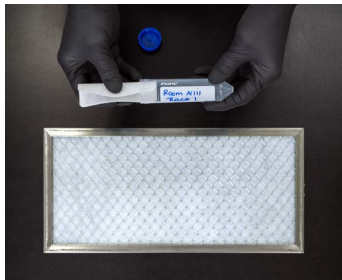


- 4 Place exhaust air prefilter onto rack with **REPLACE™** facing the oncoming cage exhaust airflow.



- 5 If the prefilter needs to be cleaned or replaced during the health monitoring period, remove **REPLACE™** and place on a clean surface or in a clean plastic bag. Reposition **REPLACE™** on new or cleaned prefilter as in steps 2-3 and place exhaust air prefilter onto rack as in step 4.

REPLACE™ Sample Collection and Submission



- 6 At the end of the monitoring period remove **REPLACE™** from prefilter. Curl **REPLACE™** lengthwise with fleece-side-inward, place in labeled 50 mL conical tube and secure lid.



- 7 Ensure tubes are appropriately labeled, and store samples at room temperature until read to ship. Place organized tubes in shipping container with packaging material to prevent damage.



- 8 Complete online submission form. Send samples to IDEXX BioAnalytics.

Receive Results



Connect with our experienced team to learn more about REPLACE™

 idxxbioanalytics-europe@idexx.com

 idxxbioanalytics.eu/REPLACE

