

Cell Health & Biologics Submission Guide

Your comprehensive tool to navigate cell testing



The easiest way to navigate cell testing. Only from IDEXX BioAnalytics.

You trust IDEXX to deliver the accurate, reliable results you need to keep your research programs on track.

IDEXX BioAnalytics provides easy access to a comprehensive suite of services, enabling you to select the tests you need and ship off your samples in minutes.

We're driven to support your research. Here's how you can get started today:



1. Choose cell health services

Select from our comprehensive menu of tests to meet any cell research application.



2. Ship your samples

Get step by step instructions to safely prepare and ship your samples.



3. Get your results

Once we receive your samples, we will run the assays and deliver results in a matter of days



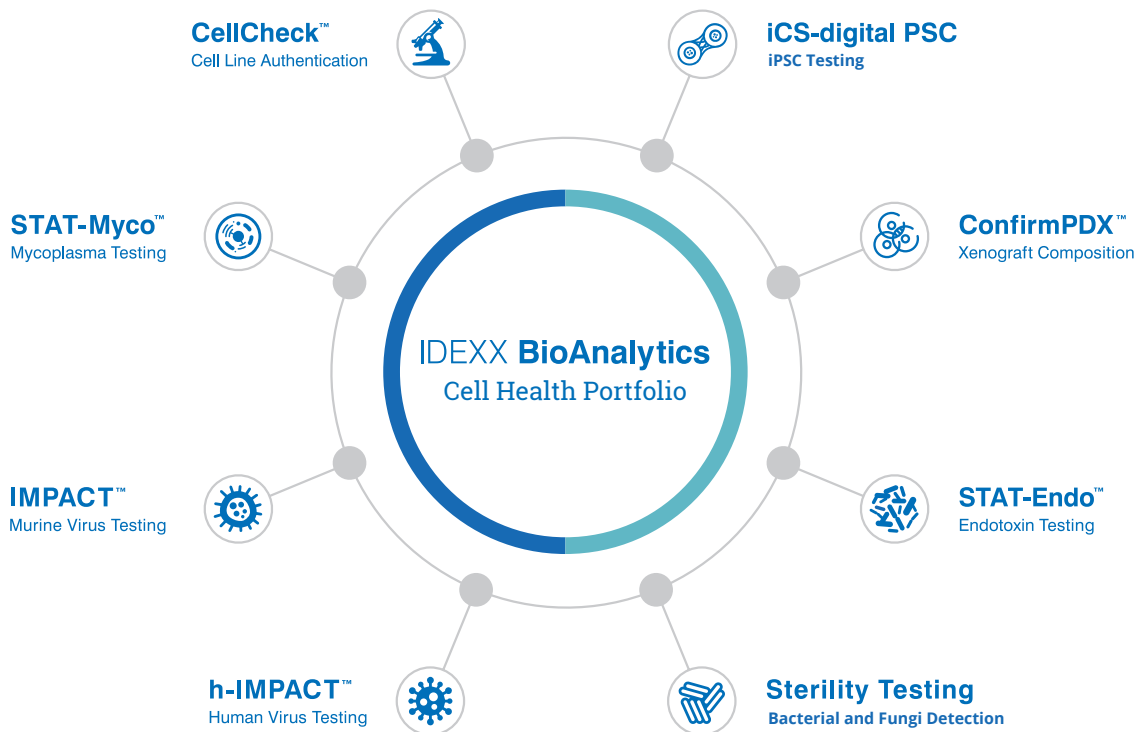
4. Make online payment

We'll send you an invoice for secure online payment.



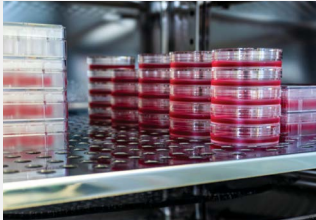
We're on the journey with you.

When it comes to third-party validation, nobody does it better than IDEXX BioAnalytics. We have the portfolio to take care of all of your valuable research.





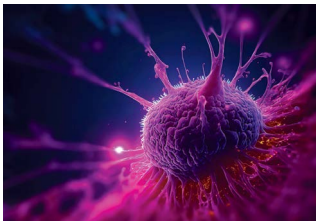
Delivering fast, accurate testing for all cell health applications.



We know mammalian cell culture

Whether you are using classic immortalized lines, custom-made knockouts or knock ins, or feeding a screening core, mammalian cells are the backbone of modern research – and IDEXX is the ideal partner to ensure your cells deliver accurate results daily.

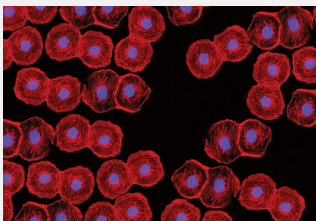
CellCheck™ + h-IMPACT™ + Sterility Testing + STAT-Myco™ + STAT-Endo™



We know tumor research

Understanding tumor behavior and analysis of regression based on therapeutic intervention is paramount for therapy pipeline progression. Researchers need to characterize all aspects of their model systems and to be confident in study conclusions.

ConfirmPDX™ + IMPACT™ + CellCheck™ + h-IMPACT™ + Histopathology



We know stem cells

Human pluripotent stem cells are essential for creating advanced models for drug screening, disease modeling and development of cell therapies. However, manipulation causes stress, and users should carefully monitor cells for genetic anomalies, track cell line identity, and screen for potential contaminants.

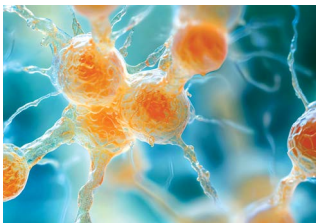
iCS-digital™ PSC + CellCheck™ + h-IMPACT™ + Sterility Testing + STAT-Myco™



We know bioproduction

Biological expression systems are essential for creating the next generation monoclonal antibody or peptide-based therapeutics. At any research-level scale, IDEXX can help you monitor your bioproduction systems for unwanted contaminants.

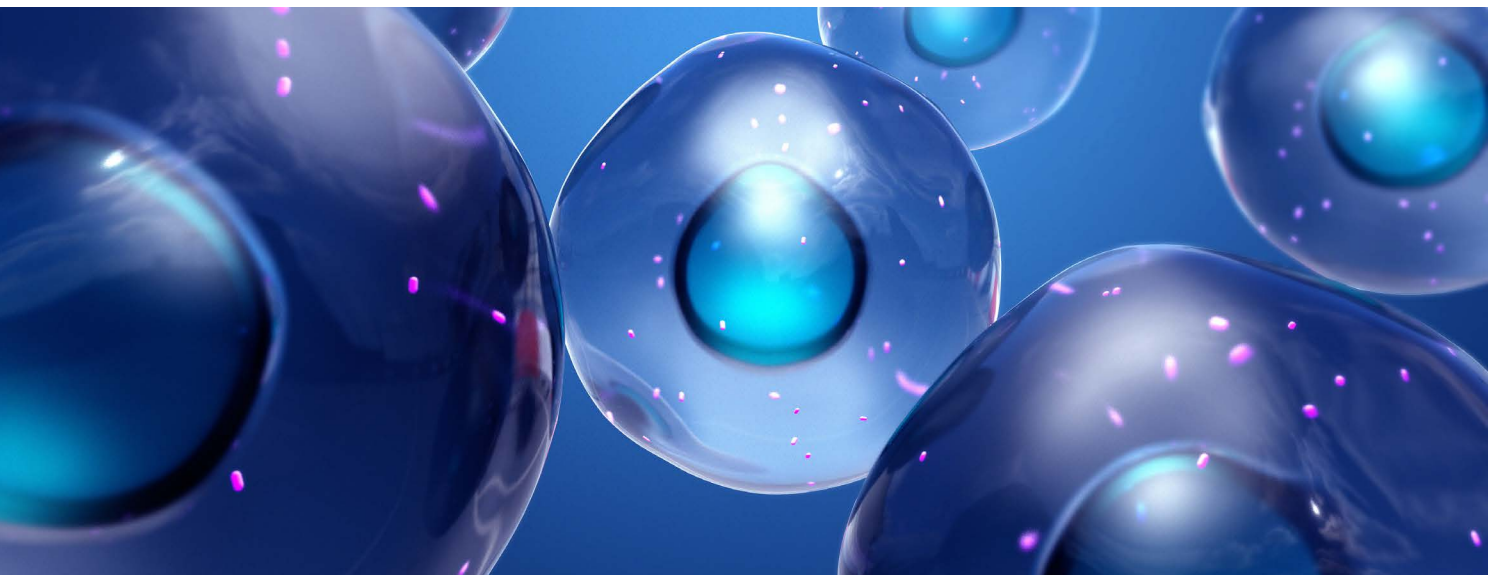
Sterility Testing + STAT-Myco™ + STAT-Endo™

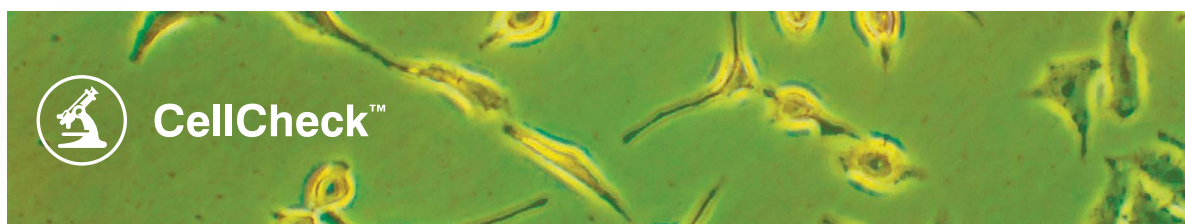


We know organoids

Organoids, 3D culture, and organ-on-chip have rapidly become popular models for discovery, drug screening and toxicology work. Organoids are complex cellular models and IDEXX is ready to help with the advanced monitoring needed to deliver breakthrough data.

CellCheck™ + ConfirmPDX™ + h-IMPACT™ + Sterility Testing + STAT-Myco™





The most comprehensive cell line authentication available.

A foundation of cell-based research is having complete confidence in the identity of your cell lines. Contamination and misidentification of cell lines happen to the most careful of labs. Let IDEXX CellCheck™ and our team of scientists make your cell authentication plan a breeze.

- + STR-based cell-line authentication for detection of contaminated or misidentified cell lines.
- + All samples receive interspecies contamination testing for human, mouse, Chinese hamster and African green monkey.

Sample Type

Cells

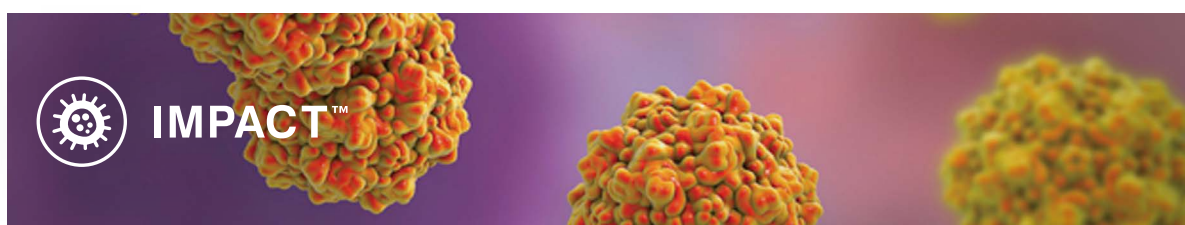
1x10⁶ cells/vial
In media, PBS, cell pellet, or frozen cryovial

Tumor/Tissue

30 mg (2-3 mm³)

Shipping

Submit frozen overnight on ice packs or dry ice.



Minimize risk with murine virus testing.

Protect your cells and your in-vivo studies with comprehensive rodent pathogen testing. IMPACT™ rodent pathogen screening gives you the power to choose a virus panel that fits your needs and delivers the biosecurity your lab needs.

- + Rodent real-time PCR pathogen screening for maintaining appropriate vivarium biosecurity.
- + If sufficient volume has been submitted, IMPACT testing can be added to any other Cell Health and Biologics Test.

Sample Type

Liquid Sample (i.e., Antibodies)

500uL recommended volume, contact our service team for low-volume cases.

Cells

1x10⁶ cells/vial
In media, PBS, or cell pellet

Tumor/Tissue

30 mg (2-3 mm³)

Shipping

Submit frozen overnight on ice packs or dry ice.



h-IMPACT™

Don't let human pathogens impact your research.

Protect your research and your most valuable assets - your people. Human viruses can infect cell lines, destroying their performance and impacting data integrity. With h-IMPACT™ human virus testing, you can be sure unwanted pathogens don't introduce new variables to your research.

- + Human realtime PCR pathogen screening geared towards your biological study needs.
- + If sufficient volume has been submitted, IMPACT testing can be added to any other Cell Health and Biologics Test.

Sample Type

Cells

1x10⁶ cells/vial
In media, PBS, or cell pellet

Liquid Sample (i.e., Antibodies)

500 µL recommended volume

Tumor/Tissue

30 mg (2-3 mm³)

Shipping

Submit frozen overnight on ice packs or dry ice.



STAT-Myco

Detect Mycoplasma contamination fast.

Mycoplasma infections in cell culture facilities are undetectable to the naked eye and can spread quickly. Luckily there's a test that can detect it just as fast. STAT-Myco™ is an exquisitely sensitive real-time PCR assay that can detect species not detected by commercially available kits.

- + Real-time PCR based-assay detects over 100 species of Mycoplasma and Acholeplasma known to infect cell cultures.
- + A single sample may be used for Mycoplasma spp. PCR testing and IMPACT testing if sufficient volume is provided.

Sample Type

Cells

1x10⁶ cells/vial
In media, PBS, or cell pellet

Liquid Sample/supernatant

500 µL requested volume

Tumor/Tissue

30 mg (2-3 mm³)

Shipping

Submit frozen overnight on ice packs or dry ice.



ConfirmPDX™

Forget Steinbeck. This is the ultimate test of mice and men.

ConfirmPDX™ is a first-to-market ddPCR assay to better understand tumor composition, reporting the ratio of human-to-mouse cells with 1% resolution. No more estimating. No more uncertainty.

- + Patent-pending digital PCR assay provides an exact percentage of human and mouse cells present in any human/mouse mixed cell population.
- + PDX tumor fragments, cell lines, fresh or formalin-fixed tissues and whole blood are acceptable sample types.

Sample Type

Cells

1x10⁶ cells/vial
In media, PBS, or cell pellet

Tumor/Tissue

30 mg (2-3 mm³)

Whole Blood

25 µL minimum volume

Shipping

Submit frozen overnight on ice packs.



Sterility Testing

Fungi, bacteria, etcetera.

Microbial contamination can contribute to data variability and threaten cell culture performance, bioproduction yield, and animal health. That's why our sterility testing combines proprietary media formulations and MALDI-TOF mass spectrometry to identify your contaminant from tens of thousands of bacterial and fungal strains.

- + Designed to detect a very wide array of microbial contaminants, including many fastidious and slow-growing bacteria and fungi.
- + Submit tissue culture media + cellular material as some micro-organisms are intracellular or highly cell-associated.

Sample Type

Cells, Culture Media, or Other Liquid for Sterility

1000 µL total volume (if volume is insufficient, limited media will be inoculated)

Shipping

Submit overnight on ice or frozen on dry ice.



Put an end to Endotoxin.

Endotoxin is not readily observed in cell culture by phenotypic change. That's why STAT-Endo™ uses targeted assays to deliver fast and accurate results on your samples and remove all uncertainty from your research programs.

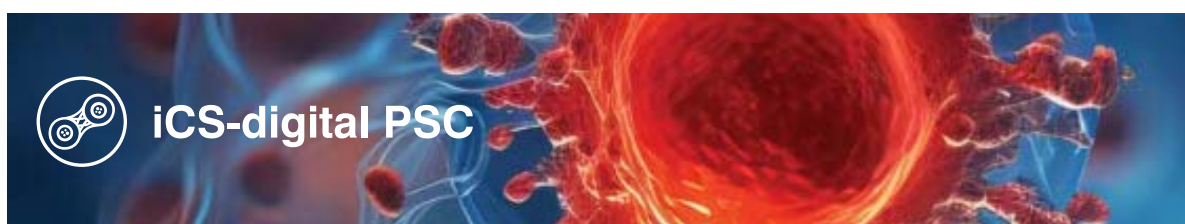
- + The STAT-Endo™ (LAL) assay detects bacterial endotoxin by chromogenic, Limulus Amebocyte Lysate-based testing.
- + STAT-Endo™ (LAL) is for the in vitro quantitative determination of various biological fluids (sera, plasma), devices (PBS wash), filters (PBS wash), and tissue culture medium. The assay is intended for research use only and is not for use in diagnostic or therapeutic procedures or applications.

Sample Type

PBS (filter or device wash)
Serum
Plasma
Injectable materials
Cell Culture Media

Shipping

Submit frozen overnight on ice packs.



The fastest copy number variant genomic testing assay available for pluripotent stem cells.

The iCS-digital PSC 24-probe test from our partners at Stem Genomics captures over 90% of recurrent defects in hPSCs, including the amplification that accounts for one quarter of recurrent abnormalities in hPSCs worldwide. This test excels at pinpointing sub-karyotyping abnormalities that might elude detection with traditional G-banding methods.

- + Screen hPSCs at various points in the differentiation and culture process to catch acquired genomic copy number abnormalities.
- + To create a holistic stem cell testing routine, iCS-digital may be run with STAT-Myco and CellCheck on a single sample.

Sample Type

Cells
1x10⁶ cells/vial
In media, PBS, or cell pellet

Shipping

Submit frozen overnight on ice packs.

Most combinations of Mycoplasma, IMPACT, CellCheck, ConfirmPDX, Endotoxin, and iCS-digital PSC testing may be done using a single sample. Sterility testing requires an additional sample of 1000-1500 μ l. **Please consult our team when combining tests.**



Here are some frequently asked questions.

Q. Can I submit one sample for multiple tests?

- A.** Yes, one sample may be used for any combination of tests excluding sterility. For added sterility testing, we need a dedicated vial with 1000 uL.

Q. What is Cell Passport?

- A.** CellPassport is the quick-order workflow for cell testing, only from IDEXX BioAnalytics. Ordering IDEXX Services through Cell Passport is your fastest route to ensuring the health of your cells. We understand that you need assurance of the health of your cells and you need it quickly, so we designed Cell Passport as your fast track to third-party validation

Q. How can I pay for my Cell Health & Biologics order?

- A.** Once your tests are complete and your results are available, we will send you an invoice, including a link for secure online payment if you choose to pay with a credit card.

Q. What is the difference between a purchase order and an invoice?

- A.** Purchase orders are generated by buyers (submitters) to internally confirm funds and track the purchase. Invoices are official payment requests made by sellers (vendors) to buyers (submitters) after services have been completed. Invoices should reflect associated PO numbers for payment to be issued.

Q. How do I access my test results?

- A.** We will email your results and post them to your account in our Online Submission Portal. If you don't have an account in the portal, we'll create one for you and email your credentials to log in.

**Q. What is the typical turnaround time for tests?**

- A.** Most of our tests have a turnaround time of 3-5 days, except for Sterility Testing (11 days) and STAT-Endo™ (10 days). You can find detailed information on each test on your Cell Passport ordering page.

Q. How do I reach the Client Support Services (CSS) team?

- A.** Our Client Support Services (CSS) team can be reached at 1-800-669-0825 or idxxbioanalytics@idexx.com.

Q. What should I do if I have billing related questions?

- A.** Our billing team is here to work with you to answer any questions, and ensure you have a positive experience. Feel free to reach out to them via email, and they will be glad to assist you:

PO Notification email: idxxbioanalytics@idexx.com

Invoicing Question email: IBS-NAinvoicing@idexx.com

Invoice Remittance email: remittances@idexx.com

Q. Can I set-up a cell health program for my institution or organization?

- A.** Yes, we are happy to work with any organization or institution to learn more about your cell-based programs and help develop the right-size testing program to fit your needs.

Depending on the cells you culture, the number of users, and the goals of your group, IDEXX will help you safeguard your valuable cell-based research.



Connect with our team if you have any questions, or need any support with your Cell Health and Biologics order!



Contact our client support services team today

1 800 669 0825
idexxbioanalytics@idexx.com



Ship to

IDEXX BioAnalytics
4011 Discovery Drive
Columbia, MO 65201



Additional submission tips

- + Please include printed packing slip when shipping your samples
- + To avoid delays in testing, ensure tube label is clearly written and matches submission exactly
- + Ensure labels on tubes are freezer-safe
- + Screw-cap cryo-vials are preferred. If snap cap tubes are used ensure cap is properly sealed with Parafilm.
- + Cell submission is preferred, but if DNA is submitted it should be high-quality DNA of >20 ng/μL (150 ng minimum)
- + Please ship all samples by overnight courier

Need help getting started?

IDEXX BioAnalytics is relentlessly dedicated to giving scientists advanced solutions and support that help push research forward. Fast, accurate, and reliable results from the team you know and trust. Connect with our experienced team today.

****All IDEXX BioAnalytics services are intended for research use only****