

**Let's advance your next  
breakthrough together.**

Connect with our experts for guidance  
and testing support that help drive  
clearer decisions in cancer research.

---

## **Client Support Services**

### **Europe & Middle East**

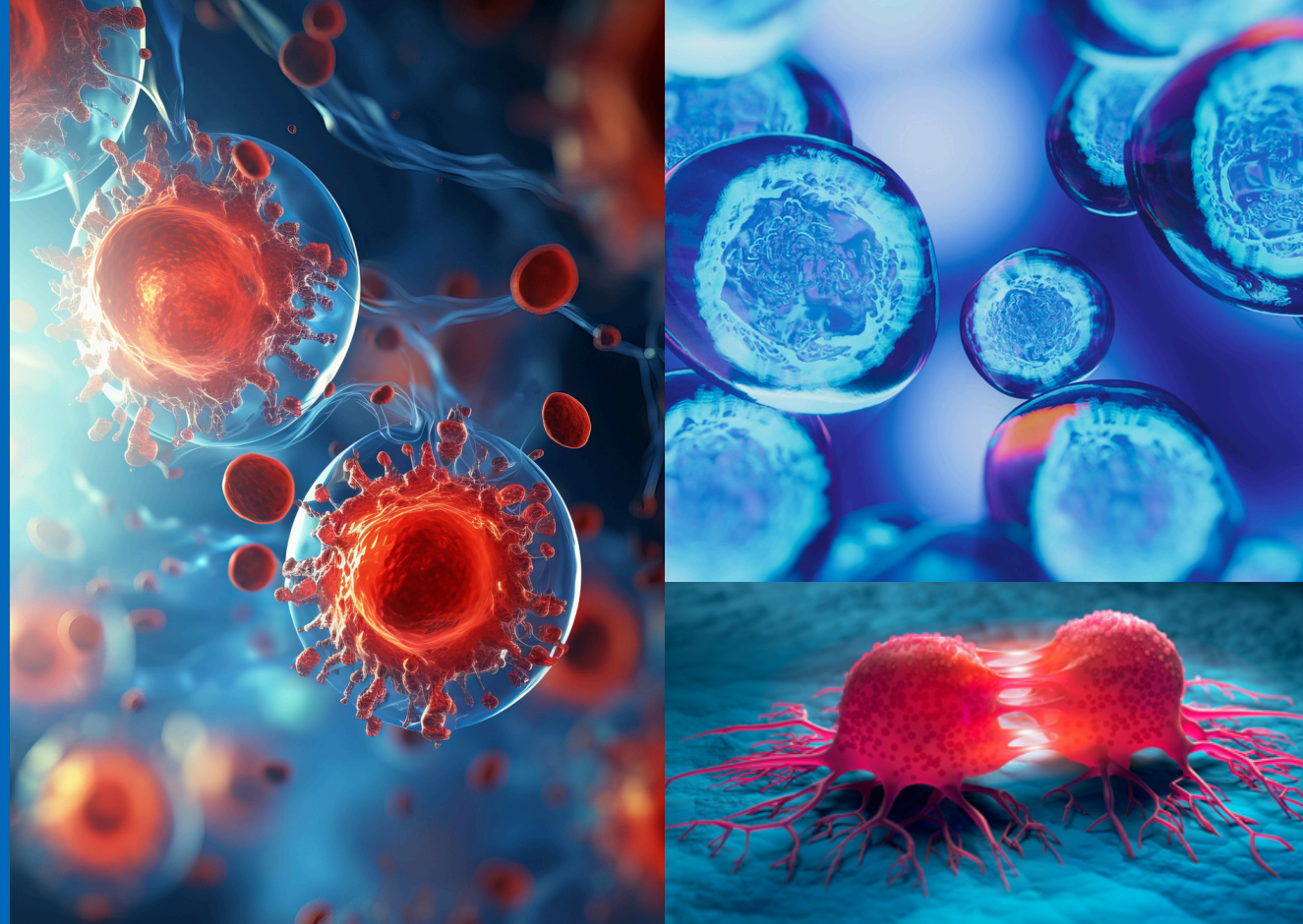
Phone: 49 (0)7154 17 50585

Email: [idxxbioanalytics-europe@idexx.com](mailto:idxxbioanalytics-europe@idexx.com)

### **North America, South America, Oceania, & Asia**

Phone: 800-669-0825

Email: [idxxbioanalytics@idexx.com](mailto:idxxbioanalytics@idexx.com)



# Oncology Testing Services

In the fight against cancer,  
knowledge is power.

**IDEXX BioAnalytics**



## Cancer is relentless. We're up to the challenge.

### Comprehensive.

We support your research with a full breadth of testing and scientific expertise. Our services—ranging from cell health testing and advanced image analysis to ACVP-board-certified pathology review—provide the clarity you need to move forward with confidence.

### Customized.

Your work is unique and your testing strategy should be, too. We tailor our oncology solutions to support your specific study design with precision, speed, and expert guidance. Personalized service is at the core of how we work.

### Clear.

Make confident decisions backed by high-quality, third-party validation. We deliver objective, dependable data that helps you assess tumor integrity, confirm cell line identity, and mitigate risk across your study. The result: clarity and greater confidence.

## Tomorrow's cancer treatments need today's testing.

### Human & Rodent Virus Testing

Detection of viral contaminants to protect your study integrity and ensure cleaner, more reliable cancer research results.

### Cell Line Authentication

Verification of cell line identity and purity to prevent misidentification and strengthen experimental reproducibility.

### Microbial & Mycoplasma Testing

Identification of microbial impurities that compromise cell health to safeguard the accuracy of downstream oncology studies.

### Routine Comparative Lab Testing

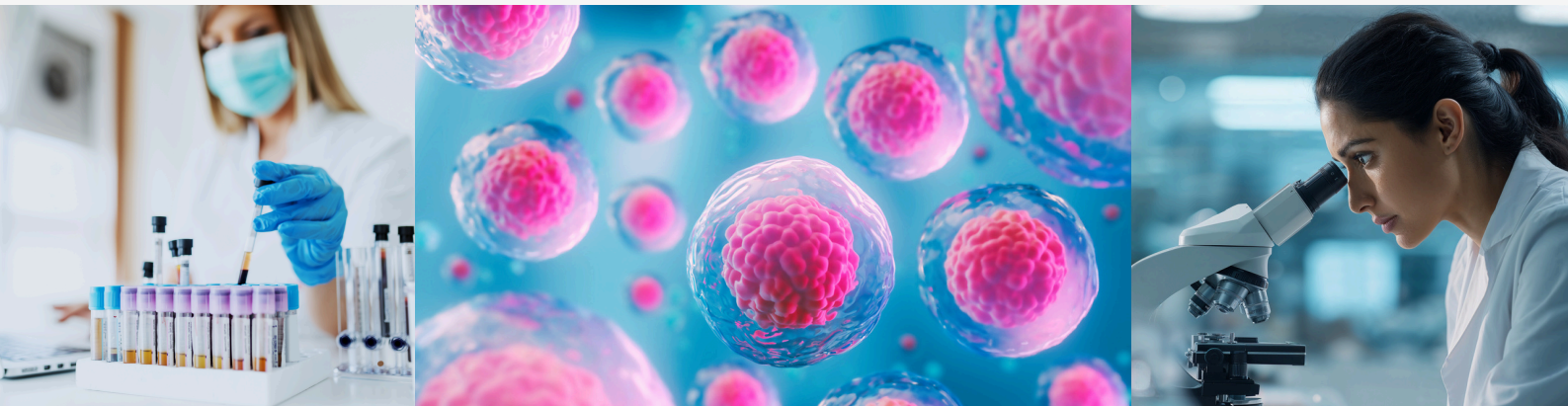
Consistent baseline health data, helping you control variables and strengthen preclinical tumor models.

### Microphysiological Systems Verification

Confirmation of your system's integrity and function, supporting more predictive cancer models and higher-confidence translational insights.

### Histopathology

Expert tissue evaluation to characterize tumor structure, treatment response, and study endpoints with precision.



IDEXX BioAnalytics